

Vernon Middle School



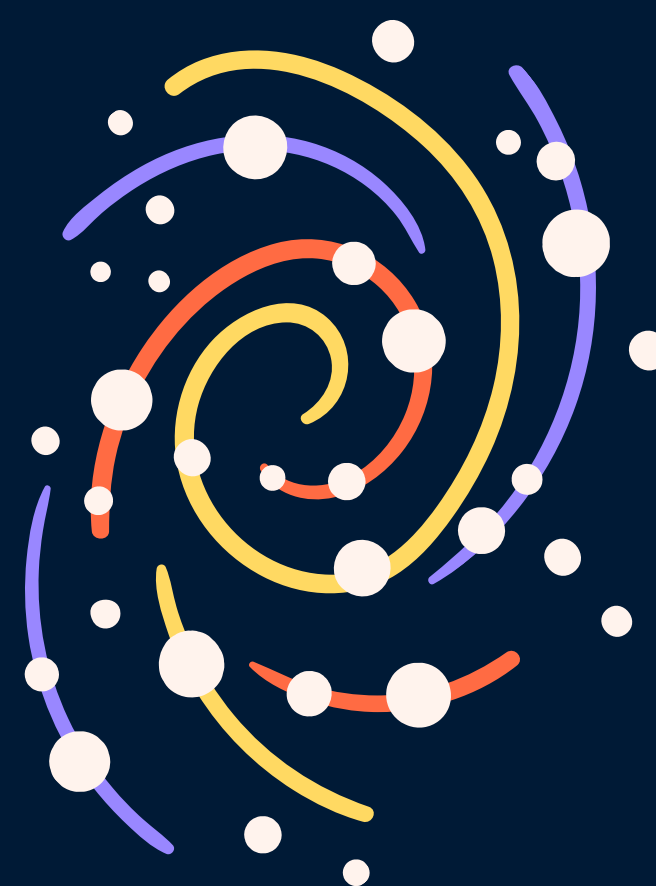
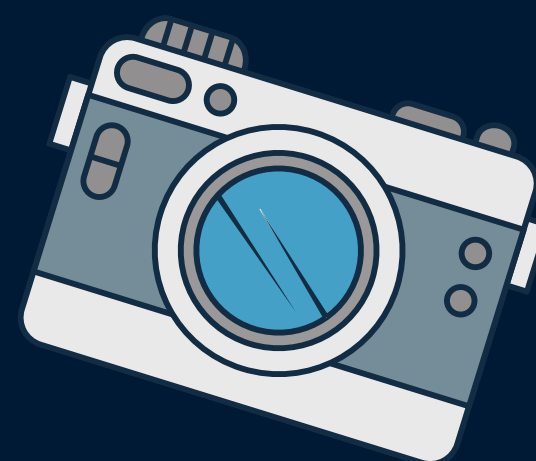
STEAM



(Science. Technology. Engineering. Art. Mathematics.)



Fair



CATEGORIES:

*ART

*CRAFTS

*PHOTOGRAPHY

*EDUCATIONAL POSTERS

*3D MODELS

*HORTICULTURE



Projects Due 2/1/23

VERNON MIDDLE SCHOOL

STEAM FAIR

RULES

- 1 entry per category per student
- Attach the identification label found at the bottom of this page to the back of each entry
- Each project is judged individually using the specified criteria for each category.
- Each entry will be awarded a blue ribbon or participation ribbon..
- A Best of Show is selected from the blue-ribbon projects from each category.
- Entries not meeting rules or guidelines will not be judged.

ART

- Entries can include woodworking, paintings, drawings, sculpture, and weaving.
- No tracing allowed.
- Judging criteria: creativity, design, and neatness.

CRAFTS

- Entries can include wreaths, ceramics, holiday ornaments, kits, and paper art.
- Judging criteria: creativity, technique, and neatness.

PHOTOGRAPHY

- Prints must be submitted for entry.
- Entries may be in color or black and white.
- Maximum size for a single photo is 8"x10".
- All photos must be mounted on a mat, poster board, construction paper, or foam core.
- The overall maximum size of a mounted photograph shouldn't be over 12"x14".
- **No frames allowed.**
- Judging criteria: sharpness, contrast, exposure, creativity, and color.

POSTERS

- Use ½ sheet of posterboard 14"x22" either horizontally or vertically.
- Entry should have a title.
- Entry should educate viewers about a topic of your choice.
- Crayon, markers, paint, stickers, photographs, magazine cutouts, etc can be used.
- Judging criteria: title, topic easily understood, educational message, creativity, and neatness.

3D MODELS

- Kits – can include LEGO, Kynex, or other commercially produced items.
- Physical – a handcrafted representation of an object like a building, mountain, landscape, watershed, etc.
- Judging criteria: neatness, creativity, complexity.

HORTICULTURE

- Entries can include house plants, potted plants, succulents, and dish gardens.
- Dish gardens must have at least three different plant varieties.
- Youth must care for the entry at least 90 days before the fair.
- Label the plant with at least the common name.
- Judging criteria: clean, free of disease/insects, well-groomed, no dead leaves, and a clean, suitable container.

Name: _____

Vernon Middle School, Teacher _____

Grade _____

Entry Class (Category) _____

Age Division: C